

You will be using MTU's remote desktop access, which is typically used for MTU students. For the Cyber Academy, please follow the same steps but where it states enter "student number and password", enter your given username and password that has been provided. The lab access you will see is Cyber Academy-2021.

1. Double-Click on the "LaunchVM.." shortcut on the left hand of the Desktop.



2. The next page that opens should list all the Virtual Machines Available:
- 3.

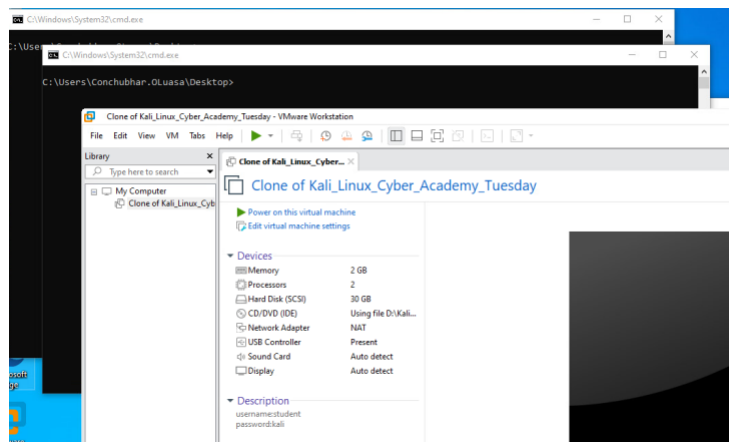


Click on the VMs you want to run:

- Kali_Linux_Cyber_Academy_Thursday
- Kali_Linux_Cyber_Academy_Tuesday
- Kali_Linux_Cyber_Academy_Wednesday



4. Click on the "Open in VMware" button for the Virtual Machine that you need.
5. Two black CMD Windows will open. Don't close these Windows, be patient!! About 10 seconds later VMware Workstation will open a clone of the Virtual Machine
- 6.



7.

8. Click "Power On" to start the Virtual Machine.